

SanMar

Product Integration Guide

Product Information – Inventory – Pricing – Daily Shipment Status – Invoicing

Copyright © 2024 SanMar Corporation. All Rights Reserved. No part of this publication may be reproduced or transcribed in any form without permission of the publisher.

Product Information Overview

While using our product information we require that your database is updated regularly to reflect any changes that affect our available stock and pricing throughout the year as well as product evolution such as: Coming Soon, New, Regular, Active and Discontinued product statuses.

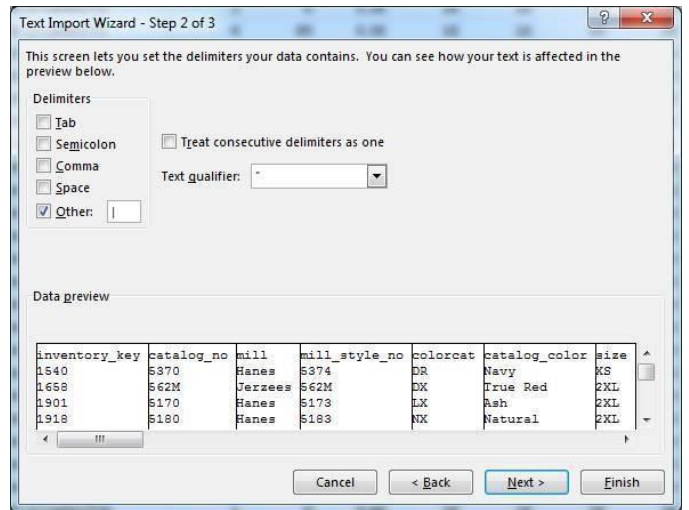
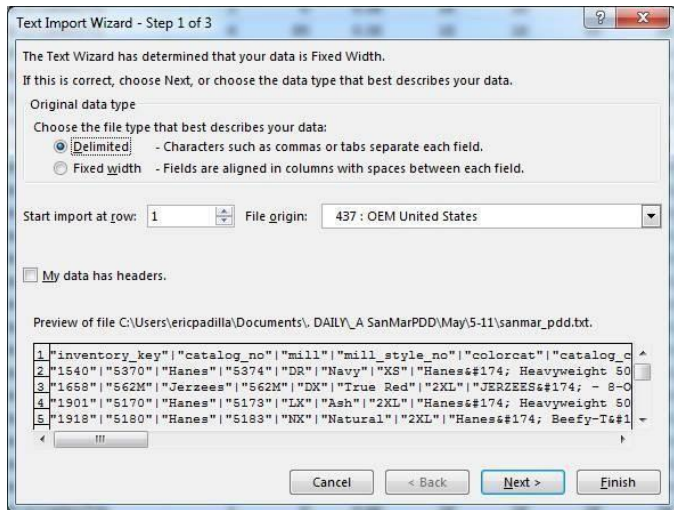
You can either use the SanMar Data Library or request access to our FTP server for additional data with inventory such as the SanMar_EPDD.csv file (bulk inventory) or the sanmar_dip.txt file (inventory by warehouse). If you are using our inventory and/or sale pricing information, we recommend daily or *weekly* updates otherwise, monthly to quarterly updating is recommended. Please note that our entire catalog is updated annually at the end of every July and there are additional product releases in January, March and May, which also include discontinued product changes.

In order to create the functionality you desire, you may need to use a combination of our data files or web services data. All our files contain our inventory_key and size index or unique_key (which is created by the inventory_key and size index appended to the end). This is our unique identifying number for each style, color and size combination for every product that SanMar sells and matches to the unique_key field in our product information files. This unique identifying number may require mapping data from different files with the unique_key or inventory_key and size index to create the relationship to the additional product information. We also recommend downloading our product images and linking to them on your local server.

How to open .txt files in Excel

You will need have excel already open, then browse and select the.txt file you would like to open.

Once it opens, it will give delimiter options, select Delimited then click Next. In the next window, select 'other' and enter a pipe "|" (Shift + \ Key), then click Finish. Once the file is opened you can save it as an XLS or CSV file.



Brand Restrictions

The following brands are prohibited from being sold without embellishment on any third party or direct to consumer website, including Amazon, eBay, and Craigslist:

Brooks Brothers	Eddie Bauer	OGIO	Tommy Bahama
Carhartt	New Era	The North Face	TravisMathew
Cotopaxi	Nike		

Map Pricing

All customers must adhere to our Minimum Advertised Pricing (MAP) policy. Per our sales policy, customers may not advertise or promote products at discounts greater than 10% off MSRP or SanMar promotional pricing for retail items or 20% for our private label brands. Customers may not advertise any discount on bags by OGIO.

MAP = 10% OFF MSRP		MAP = 20% OFF MSRP	MAP = MSRP	No MAP
Alternative Apparel	Outdoor Research	AllMade	Carhartt	Anvil
Brooks Brothers	Red House	CornerStone	Nike Bags	Bella+Canvas
Bulwark	Red Kap	District	Tommy Bahama	Comfort Colors
Champion	Russell Outdoors	Mercer+Mettle		Fruit of the Loom
Cotopaxi	Spacecraft	Port & Company		Gildan
Eddie Bauer	tentree	Port Authority		Hanes
New Era	The North Face	Sport Tek		Jerzees
Nike	Travis Mathew	Volunteer Knitwear		Next Level
OGIO	WonderWink			Rabbit Skins

Global Trade Item Numbers (GTIN)

GTIN's for the following brands are available in the **SanMar_SDL_N.csv** and **SanMar_EPDD.csv** files on our FTP server:

Allmade	Champion	Hanes	Port Authority	tentree
Alternative	Comfort Colors	Jerzees	Precious Cargo	The North Face
American Apparel	Cornerstone	Mercer+Mettle	Rabbit Skins	Tommy Bahama
Anvil	Cotopaxi	Next Level	Red House	TravisMathew
Bella+Canvas	District	Nike	Red Kap	Volunteer Knitwear
Brooks Brothers	Eddie Bauer	Ogio	Russel Outdoors	Wonderwink
Bulwark	Fruit of the Loom	Outdoor Research	Spacecraft	
Carhartt	Gildan	Port & Co	Sporttek	

The SanMar Data Library - Product Information and Images

The data library on sanmar.com contains our product data and is customizable to meet your individual product needs. If you are interested in inventory data, please contact us. Here is the link to the data Library:

<https://www.sanmar.com/resources/electronicintegration/sanmardatalibrary>

The SanMar Data Library includes the following:

- ✦ Style numbers & Colors Names
- ✦ Product Descriptions, Categories & Product Weight in lbs.
- ✦ Piece, Dozens, Case, MSRP & MAP Pricing
- ✦ Product SKUs for each style, color & size combination

Data Library Images Folders

- ✦ Color Product Image
(Front model) medium-resolution (1200 X 1800, 300 DPI) images and image URLs
- ✦ Thumbnails, Color Squares & Brand Logos
- ✦ Spec Sheets & Product Measurements

SanMar Data Library File Names

Based on preferences selected when downloading the data SanMar_SDL_DS.zip

– do not check any option

SanMar_SDL_DSI.zip - do not check any option but Include Images

SanMar_SDL_S.zip - Do not include Duplicates.

SanMar_SDL_SI.zip - Include Images & Do not include Duplicates

SanMar_SDL_D.zip - Do not include trademark or registered symbols

SanMar_SDL_DI.zip - Include images & do not include trademark or registered symbols

SanMar_SDL_N.zip - Do Not Include Duplicates & Do not include trademark or registered symbols

SanMar_SDL_I.zip - Include Images, do not Include Duplicates & Do not include trademark or registered symbols

SanMar FTP Server Data

For FTP access contact SanMar Integrations at sanmarintegrations@sanmar.com or call 206-727-6458 and we will send you our integration agreement, which must be digitally signed by the owner or manager of the company and returned.

FTP Daily Product Data

- ✦ Product SKUs, Style numbers, Colors, Descriptions, Categories & Weights in lbs.
- ✦ Bulk Inventory & Inventory by warehouse
- ✦ Piece, Dozens, Case, MSRP & MAP Pricing
- ✦ Shopify Web Store File

FTP Images Folders

- ✦ Product Images
Front & Back Model, Front & Back Flat Images
- ✦ Thumbnails, Color Squares & Brand Logos
- ✦ PDF Spec Sheets & Product Measurements

Optional Daily Files

These are files that can be configured upon request.

- ✦ Daily Pricing CSV File
- ✦ Daily Order Status Text File
- ✦ Daily Invoice Txt File
- ✦ Daily Invoice Excel File
- ✦ EDI Standard 810 Invoice File
Version: ANSI X1200401

FTP (File Transfer Protocol) Client Information

An FTP client is software which uses the File Transfer Protocol (FTP) to upload or download files on our server. Here is the link to download an FTP Client of your choice. <https://tinyurl.com/FTP-clients>

FileZilla Download & Settings FileZilla is a popular FTP client that is used by many of our customers and needs some of the default settings changed to connect to our FTP server.

Download FileZilla <https://filezilla-project.org/download.php?type=client>

Go to File -> Site Manager then Click on 'New Site'

Host: [ftp.sanmar.com](ftp://ftp.sanmar.com) **PORT:** 2200

Protocol: SFTP – SSH File Transfer Protocol

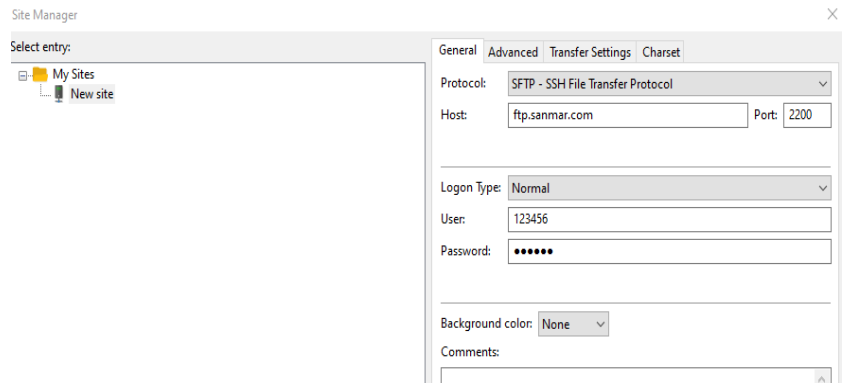
The FTP server is not compatible with **TLS** protocol
Transport Layer Security

Logon Type: Normal

User: (Your Customer Number)

Password: (FTP Password)

Your sanmar.com username and password will NOT work on our FTP server.



FTP Daily Product Information Files

The following data files are in the SanMarPDD FTP folder and are updated nightly and are completed by 6am PST. Our main product information files are the SanMar_SDL_N and the SanMar_EPDD csv files. Both files have all the basic product data including product descriptions, pricing, and item weight in lbs. The SanMar_EPDD file has bulk inventory, separate main category and subcategory data as well as front model, back model, front flat and back flat image names that match the images names in the EPDD.zip images folders. There are duplicated unique keys in the SanMar_EPDD file due to multiple main category and subcategories.

Please Note: Product data with a “Coming Soon” Product Status may be incomplete until the Product Status is updated to “New” and available for purchase.

FTP File Descriptions

Page

SanMar SDL Files (SanMar Data Library)

8

The SDL_N file has the main category and subcategory data together in the main category column separated by semi-colons, however there are no duplicated unique keys in this file. This file has image URL's and product image names that match with the image names downloaded from the data library.

Sanmar_SDL_N.csv: Basic product data including product descriptions, pricing and item weight in lbs. (No Inventory)

Sanmar_SDL_N.zip: Zipped SDL file (Contains no other files or folders).

SanMar_SDL_DI.csv: Basic product data including product descriptions, pricing and item weight in lbs.

Sanmar_SDL_DI.zip: Zipped SDL file (Contains medium resolution product Images 1200x1800, 300 DPI).

SanMar EPDD Files (Electronic Product Data Download)

9

SanMar_EPDD.csv: Basic product data including product descriptions, pricing, item weight in lbs., and Inventory.

SanMar_EPDD.zip: Contains the EPDD file and back model, front flat, back flat images (1200x1800, 300 DPI).

SanMar PDD & Catalog Files

11

sanmar_pdd.txt: Basic product data including GTIN, product descriptions and extended product descriptions.

sanmar_activeproductsexport.txt: Product data with extended product descriptions.

Catalog.txt: Product data with extended product descriptions.

Daily Inventory & Sales Pricing Files

13

Sanmar_dip.txt: Current inventory data including sale dates/pricing, and inventory by warehouse, updated hourly.

Sanmar_SaleItems.txt: Current sale item product data

Shopify Website Formatted File

15

sanmar_shopify.csv: Daily product data file including pricing and inventory for Shopify web stores.

The following daily files are created by request.

These are optional files that are provided by request and are exported daily after 2 AM PST to your FTP folder.

FTP File Descriptions	Page
Special Pricing Files	17
Incentive Pricing File: Daily CSV file with only your special program pricing (TVBP)	
Daily Pricing File: Daily complete CSV file with your lowest available price	
Daily Delta File: Daily Partial CSV file with your lowest price available (Incremental daily changes)	
Order Confirmation Files	19
Daily Shipment Status File: Daily order tracking information text file	
Invoicing Files	20
Daily Invoice Text File: Daily order invoices in .txt file format exported to your FTP folder.	
Daily Invoice Excel File: Daily order invoices in .XLSX file format emailed to you.	
EDI Files	22
EDI-810 Standard Invoice Files: Electronic DATA Interchange order invoice files	
Change Log	25

SanMar SDL N.csv & SanMar SDL DI.csv - Comma delimited quote encapsulated files

FIELD ELEMENT	DESCRIPTION
UNIQUE_KEY	Unique Identifier created as combination of INVENTORY_KEY & SIZE_INDEX
PRODUCT_TITLE	Includes Manufacturer's name
PRODUCT_DESCRIPTION	Description of product features
STYLE#	Mill style # same as style number used in catalogs
AVAILABLE_SIZES	Sizes available
BRAND_LOGO_IMAGE	File name of Brand image such as Port Authority
THUMBNAIL_IMAGE	File name of Small image for Lifestyle-Model picture
COLOR_SWATCH_IMAGE	Individual color Image available in a style.
PRODUCT_IMAGE	File name of Lifestyle-Model picture jpg for web sites
SPEC_SHEET	PDF or Word document listing specifications.
PRICE_TEXT	How price applies such as Price applies to.....
SUGGESTED_PRICE	Recommended retail
CATEGORY_NAME	Major categories such as Tee Shirts, Knit Shirts, Woven
SUBCATEGORY_NAME	Such as 100% Cotton Tee or Crewneck Sweatshirts or Camp Shirts
COLOR_NAME	Full Name of color
COLOR_SQUARE_IMAGE	File name of Image which creates the square in a color swatch.
COLOR_PRODUCT_IMAGE	File name of Regular (usually folded) image
COLOR_PRODUCT_IMAGE_THUMBNAIL	File name of Small picture of (usually folded) items
SIZE	Size of item
PIECE_WEIGHT	Approximate Weight Per Piece – lbs. /piece – Final weight determined at shipping.
PIECE_PRICE	Price Per Piece based upon a purchase of 5 pieces or less of a single style & Color
DOZENS_PRICE	No longer Available - Displays Price Per Piece
CASE_PRICE	Price per piece based upon Case Purchase by Size / Color / Style
PRICE_GROUP	No longer Available - Displays NA
CASE_SIZE	Total # of pieces of a single style /color/ size per case
INVENTORY_KEY	SanMar Proprietary Inventory Key Used for text file order submission
SIZE_INDEX	Size category number for each size grouping Used for text file order submission
SANMAR_MAINFRAME_COLOR	Abbreviated color name Used for web services order submission
MILL	Brand Name of Manufacturer
PRODUCT_STATUS	Displays Coming Soon, New, Regular and Discontinued Style statuses
COMPANION_STYLES	Related Youth and Ladies Styles when available
MSRP	Manufactures Suggested Retail Price
MAP_PRICING	Minimum Advertised Pricing (MAP)
FRONT_MODEL_IMAGE_URL	Front Model Image - 1200x1800px jpg with model
BACK_MODEL_IMAGE_URL	Back model image URL- 1200x1800px jpg with model

FRONT_FLAT_IMAGE_URL	Front flat Image URL - 1200x1800px jpg without model
BACK_FLAT_IMAGE_URL	Back flat image URL - 1200x1800px jpg without model
PRODUCT_MEASUREMENT	PDF document listing flat product measurements.
PMS_COLOR	Pantone or PMS (Pantone Matching System) color
GTIN	Product GTIN # (Not all SanMar Products are assigned GTINS)
DECORATOR_SPEC_SHEET	Decoration Spec Sheet URL

Sanmar_EPDD.csv - Comma delimited quote encapsulated files

FIELD ELEMENT	DESCRIPTION
UNIQUE_KEY	Unique Identifier created as combination of INVENTORY_KEY & SIZE_INDEX
PRODUCT_TITLE	Includes Manufacturer's name
PRODUCT_DESCRIPTION	Description of product features
STYLE#	Mill style # same as style number used in catalogs
AVAILABLE_SIZES	Sizes available
BRAND_LOGO_IMAGE	File name of Brand image such as Port Authority
THUMBNAIL_IMAGE	File name of Small image for Lifestyle-Model picture
COLOR_SWATCH_IMAGE	Individual color Image available in a style.
PRODUCT_IMAGE	File name of Lifestyle-Model picture jpg for web sites
SPEC_SHEET	PDF or Word document listing specifications.
PRICE_TEXT	How price applies such as <i>Price applies to.....</i>
SUGGESTED_PRICE	Recommended retail
CATEGORY_NAME	Major categories such as Tee Shirts, Knit Shirts, Woven
SUBCATEGORY_NAME	Such as 100% Cotton Tee or Crewneck Sweatshirts or Camp Shirts
COLOR_NAME	Full Name of color
COLOR_SQUARE_IMAGE	File name of Image which creates the square in a color swatch.
COLOR_PRODUCT_IMAGE	File name of Regular (usually folded) image
COLOR_PRODUCT_IMAGE_THUMBNAIL	File name of Small picture of (usually folded) items
SIZE	Size of item
QTY	Quantity available as of this download – all warehouses combined
PIECE_WEIGHT	Approximate Weight Per Piece – lbs. /piece – Final weight determined at shipping.
PIECE_PRICE	Price Per Piece based upon a purchase of 05 pieces or less of a single style & Color
DOZENS_PRICE	No longer Available - Displays Price Per Piece
CASE_PRICE	Price per piece based upon Case Purchase by Size / Color / Style
PRICE_GROUP	No longer Available - Displays NA
CASE_SIZE	Total # of pieces of a single style /color/ size per case
INVENTORY_KEY	SanMar Proprietary Inventory Key Used for text file order submission

SIZE_INDEX	Size category number for each size grouping Used for text file order submission
SANMAR_MAINFRAME_COLOR	Abbreviated color name Used for text file order submission
MILL	Brand Name of Manufacturer
PRODUCT_STATUS	Displays Coming Soon, New, Regular and Discontinued Style Statuses
COMPANION_STYLES	Related Youth and Ladies Styles when Available
MSRP	Manufactures Suggested Retail Price
MAP_PRICING	Minimum Advertised Pricing (MAP)
FRONT_MODEL_IMAGE_URL	Front Model Image URL - 1200x1800px jpg with model
BACK_MODEL_IMAGE	Back model image File Name- 1200x1800px jpg with model
FRONT_FLAT_IMAGE	Front flat Image File Name - 1200x1800px jpg without model
BACK_FLAT_IMAGE	Back flat image File Name - 1200x1800px jpg without model
PRODUCT_MEASUREMENT	PDF document listing flat product measurements.
PMS_COLOR	Pantone or PMS (Pantone Matching System) color
GTIN	Product GTIN # (Not all SanMar Products are assigned GTINS)
DECORATOR_SPEC_SHEET	Decoration Spec Sheet URL

A **sanmar_pdd.txt** - Pipe delimited file - **Contains GTINS**

1	A	inventory_key	SanMar Product Identifier
2	B	catalog_no	SanMar Catalog Style Number
3	C	mill	Mill Brand Name
4	D	mill_style_no	Factory Style Number
5	E	colorcat	No longer Available - Displays NA
6	F	catalog_color	Product Color
7	G	size	Product Size
8	H	description	Product Description
9	I	extended_description	Extended Product Description
10	J	ea_price	Price Per Piece
11	K	dz_price	No longer Available - Displays Price Per Piece
12	L	dz_qty	No longer Available - Displays Per Piece
13	M	case_price	Price Per Case
14	N	case_qty	Units in Full Case
15	O	catalog_page	No longer Available - Displays 0
16	P	weight	Weight Per Piece in lbs.
17	Q	size_type	Internal Item Size Code
18	R	size_index	Product Size Identifier Code
19	S	steves_group	No longer Available - Displays Unknown
20	T	gtin	Global Trade Item Number

A **Catalog.txt** - TAB Delimited

1	A	INVENTORY.KEY	SanMar Product Identifier
2	B	CATALOG.NO	SanMar Catalog Style Number
3	C	MILL	Mill Brand Name
4	D	MILL STYLE#	Factory Style Number
5	E	COLORCAT	No longer Available - Displays NA
6	F	CATALOG.COLOR	Product Color
7	G	SIZE	Product Size
8	H	DESCRIPTION	Product Description
9	I	EXTENDED DESCRIPTION	Extended Product Description
10	J	EA PRICE	Price Per Piece
11	K	DZ PRICE	No longer Available - Displays Piece Price
12	L	DZ QTY	Unit Quantity for Dozens Pricing
13	M	CASE PRICE	Price Per Case
14	N	CASE QTY	Units in Full Case
15	O	CATALOG PAGE	No longer Available - Displays 0
16	P	WEIGHT	Weight Per Piece in lbs.
17	Q	SIZE TYPE	Internal Item Size Code
18	R	INDEX	Product Size Identifier Code
19	S	STEVES.GROUP	No longer Available - Displays Unknown
20	T	GTIN	Global Trade Item Number

A **sanmar_activeproductsexport.txt** - Pipe delimited file

1	A	inventory_key	SanMar Product Identifier
2	B	size_index	Product Size Identifier Code
3	C	catalog_no	SanMar Catalog Style Number
4	D	catalog_color	Mill Brand Name
5	E	size	Product Size
6	F	Whse_No	Warehouse Number: 1=Seattle WA, 2=Cincinnati OH, 3=Dallas TX, 4=Reno NV, 5=Robbinsville NJ, 6=Jacksonville FL, 7=Minneapolis MN, 12=Phoenix AZ, 31=Richmond VA
7	G	Quantity	Quantity (500 max per warehouse shown)
8	H	Piece_Weight	weight per piece in lbs.
9	I	Piece_Price	Piece Price (1-5 Pieces)
10	J	Dozens_Price	No longer Available - Displays Piece Price
11	K	Case_Price	Case Price
12	L	Case_Size	Pieces in a Case
13	M	Inventory_Key	SanMar Product Identifier (combined with size index makes up for a unique product)

Daily Inventory & Sale Pricing Files Field Descriptions

Sanmar_dip.txt - Pipe delimited file. **The Sanmar_dip.txt file is updated hourly.**

#	Column	Field Element	Description
1	A	Inventory_Key	SanMar Product Identifier (combined with size index makes up for a unique product)
2	B	Size_Index	Product Size Identifier (combined with inventory key makes up for a unique product)
3	C	Catalog_No	SanMar Catalog Number e.g. K420
4	D	Catalog_Color	Color
5	E	Size	Size
6	F	Whse_No	Warehouse Number: 1-Seattle WA, 2-Cincinnati OH, 3-Dallas TX, 4-Reno NV, 5-Robbinsville NJ, 6-Jacksonville FL, 7-Minneapolis MN, 12-Phoenix AZ, 31-Richmond VA
7	G	Quantity	Quantity (500 max per warehouse shown)
8	H	Piece_Weight	weight per piece in lbs.
9	I	Piece_Price	Piece Price (1-5 Pieces)
10	J	Dozens_Price	No longer Available - Displays Piece Price
11	K	Case_Price	Case Price
12	L	Case_Size	Pieces in a Case
13	M	Each_sale_Price	Sale Price Per Piece (if on sale)
14	N	Dozens_sale_price	No longer Available - Displays Piece Price (if on sale)
15	O	Case_sale_price	Sale Price Per Case (if on sale)
16	P	Sale_start_datetime	Sale Start Date (if on sale)
17	Q	Sale_end_datetime	Sale End Date (if on sale)
18	R	Unique_key	Unique Product Identifier (INVENTORY_KEY+SIZE_INDEX combined)
19	S	Discontinued_code	Discontinued Code S=SanMar or M=Mill - if product discontinued
21	U	SALE_START_DATE	Sale Start Date
22	V	SALE_END_DATE	Sale End Date

Sanmar_SaleItems.txt - Pipe delimited file

#	Column	Field Element	Description	Field Length
1	A	INVENTORY_KEY	SanMar Product Identifier	Implied
2	B	CATALOG_NO	SanMar Catalog Style Number	10
3	C	MILL	Mill Brand Name	20
4	D	MILL_STYLE_NO	Factory Style Number	10
5	E	COLORCAT	No longer Available - Displays NA	
6	F	COLOR	Product Color	14
7	G	SIZE	Product Size	10
8	H	DESCRIPTION	Product Description	1024
9	I	EXTENDED_DESCRIPTION	Extended Product Description	1024
10	J	EA_SALE_PRICE	Sale Price Per Piece	Implied
11	K	DZ_SALE_PRICE	No longer Available - Displays Piece Price (if on sale)	Implied
12	L	DZ_QTY	Unit Quantity for Dozens Pricing	Implied
13	M	CASE_SALE_PRICE	Sale Price Per Case	Implied
14	N	CASE_QTY	Units in Full Case	Implied
15	O	CATALOG_PAGE	No longer Available - Displays 0	Implied
16	P	PIECE_WEIGHT	Weight Per Piece in lbs.	8.4
17	Q	SIZE_TYPE	Internal Item Size Code	Implied
18	R	SIZE_INDEX	Product Size Identifier	Implied
19	S	STEVES_GROUP	No longer Available - Displays Unknown	50
20	T	GTIN	Global Trade Item Number	20
21	U	SALE_START_DATE	Sale Start Date	Implied
22	V	SALE_END_DATE	Sale End Date	Implied

Third-party Files

SanMar Shopify Data File

The Shopify file is produced daily with product information, suggested retail pricing, and inventory information.

PLEASE NOTE:

- SanMar does NOT upload Shopify data files to customer's web stores. Please refer to Shopify for more information about uploading product CSV files. <https://docs.shopify.com/manual/your-store/products/import-products>
- SanMar is unable to customize or alter this file to meet individual web stores needs and takes NO responsibility for how the data and images are presented within your web store theme. You may need to consult the theme creator, a theme developer or use Apps to achieve your desired presentation or functionality, such as <https://apps.shopify.com/bulk-edit> , or many of the other App's currently available for Shopify web stores at <https://apps.shopify.com/categories>. SanMar takes NO responsibility of ANY data or software problems that may be experienced within Shopify's web stores, themes, or APPs that is used in conjunction with our data.

Known Issues:

- The Shopify system only allows 15MB uploads and our product data file is over 30MB in size. This makes it necessary for you to remove any unwanted products from the catalog and/or split the catalog into 2-3 separate data files.
- The Shopify Web Store system has a 100-variant maximum. Styles with many colors produce errors in the upload process and causes the entire style to fail and does not upload any data for that style. **Error:** Line# - Line#:Validation failed: Exceeded maximum number of variants allowed

Due to this system limitation, this file is intended to be used with a plugin to increase the number of variants allowed per handle, such as the product customizer (<https://apps.shopify.com/product-customizer>) , or any plugin that will allow more than 100 variants per handle. Please consult Shopify for more information or suggestions at <https://docs.shopify.com/support>.

- Some image links may not resolve to an image, which also produces errors and causes the entire style to fail. If this occurs, the style will not be uploaded.
Error: Line# - LINE#: Validation failed: An error occurred while trying to download the image.
We are working to correct this issue, but do not have a timeline for a resolution at this time

SanMar Shopify File Field Names & Descriptions

#	A	FIELD NAME	DESCRIPTION
1	A	Handle	Style Number
2	B	Title	Product Title
3	C	Body (HTML)	Product Description
4	D	Vendor	Brand
5	E	Type	Category
6	F	Tags	No Data is included
7	G	Published	Published on Web Store. Default Value 'True'
8	H	Option1 Name	Default Value 'Color'
9	I	Option1 Value	Product Color Name
10	J	Option2 Name	Default Value 'Size'
11	K	Option2 Value	Product Size
12	L	Option3 Name	No Data is included
13	M	Option3 Value	No Data is included
14	N	Variant SKU	No Data is included
15	O	Variant Grams	The Product's Dozens Weight in Grams
16	P	Variant Inventory Tracker	Default Value 'shopify'
17	Q	Variant Inventory Qty	Inventory is updated daily; Max Stock 500 pieces
18	R	Variant Inventory Policy	Default Value 'deny'
19	S	Variant Fulfillment Service	Default Value 'manual'
20	T	Variant Price	Suggested Retail Pricing
21	U	Variant Compare At Price	No Data is included
22	V	Variant Requires Shipping	Default Value 'True'
23	W	Variant Taxable	Default Value 'True'
24	X	Variant Barcode	No Data is included
25	Y	Image Src	Front Model Image for the main product color
26	Z	Image Alt Text	No Data is included
27	AA	Gift Card	No Data is included
28	AB	Google Shopping / MPN	No Data is included
29	AC	Google Shopping / Age Group	No Data is included
30	AD	Google Shopping / Gender	No Data is included
31	AE	Google Shopping / Google Product Category	No Data is included
32	AF	SEO Title	No Data is included
33	AG	SEO Description	No Data is included
34	AH	Google Shopping / AdWords Grouping	No Data is included
35	AI	Google Shopping / AdWords Labels	No Data is included
36	AJ	Google Shopping / Condition	No Data is included
37	AK	Google Shopping / Custom Product	No Data is included
38	AL	Google Shopping / Custom Label 0	No Data is included
39	AM	Google Shopping / Custom Label 1	No Data is included
40	AN	Google Shopping / Custom Label 2	No Data is included
41	AO	Google Shopping / Custom Label 3	No Data is included
42	AP	Google Shopping / Custom Label 4	No Data is included
43	AQ	Variant Image	Front Model Image for all Colors
44	AR	Variant Weight Unit	Default Value 'lb'

[Daily Pricing Files Options](#)

The daily pricing files is produced by request and exported nightly after 2 AM PST to your SanMar FTP Outbound folder.

Daily Incentive Pricing File [sanmar_dpIncentive.csv](#)

Daily CSV file with special program pricing

This Special Pricing file contains our entire catalog, but only displays your special pricing in the my_price field or 0, if you do not have special pricing for that style.

Daily Pricing file [Sanmar_dp.csv](#)

Daily complete CSV file with your lowest price available

Our Daily Pricing file produces a daily file with pricing for our entire catalog and displays your lowest available price in the my_price field. Both of the Daily and Daily Delta pricing files produce the lowest available pricing in the my_price field. The Daily Delta file only has only the unique_key and my_price fields and is incrementally updated daily.

Daily Delta Pricing file [sanmar_dpc.csv](#)

Daily Partial CSV file with your lowest price available (Incremental daily changes)

Our Daily Delta Pricing file is a smaller partial file and displays your lowest available price in the my_price field for only the product pricing that have changed since the day before. The first day that this pricing file is created it will produce my price for the entire product catalog, after which will only produce data for prices that have changed since the last day the file was exported.

Comma delimited Data

#	COLUMN	FIELD ELEMENT	DESCRIPTION
1	A	Inventory_Key	SanMar Product Identifier (combined with size index makes up for a unique product)
2	B	Size_Index	Product Size Identifier (combined with inventory makes up for a unique product)
3	C	Catalog_No	SanMar Catalog Number e.g. K420
4	D	Catalog_Color	Color of product
5	E	Size	Size of product
6	F	Piece_Weight	weight per piece in lbs.
7	G	Piece_Price	Piece Price (1-5 Pieces)
8	H	Dozens_Price	No longer Available - Displays Piece Price
9	I	Case_Price	Case Price
10	J	Case_Size	Pieces in a Case
11	K	Each_sale_Price	Sale Price Per Piece (if on sale)
12	L	Dozens_sale_price	No longer Available - Displays Piece Price (if on sale)
13	M	Case_sale_price	Sale Price Per Case (if on sale)
14	N	Sale_start_datetime	Sale Start Date (if on sale)
15	O	Sale_end_datetime	Sale End Date (if on sale)
16	P	Unique_key	Unique Product Identifier (INVENTORY_KEY+SIZE_INDEX combined)
17	Q	Discontinued_code	Discontinued Code S=SanMar or M=Mill - if product discontinued
18	R	My_price	Displays case pricing or sale price, if no TVBP pricing for an item

Daily Shipment Status File (Advance Ship Notification)

The daily order status file is provided by request and provides daily order status and corresponding shipping information and is created nightly for all orders shipped that day. The file is then dropped into your FTP folder. The file contains line-item costs, associated charges, and the shipper tracking number.

1-15-16Status.txt - Tab Delimited Data

#	COLUMN	FIELD ELEMENT	EXAMPLE
1	A	CUSTOMER PO	123456
2	B	SALESORDER#	18367163
3	C	SHIP FROM	WEST CHESTER, OH
4	D	SHIP DATE	11/20/2015
5	E	SHIP TO NAME	ABC CO
6	F	ATTENTION	JOHN DOE
7	G	SHIP TO ADDRESS1	123 MAIN ST
8	H	SHIP TO ADDRESS2	Suite 102
9	I	SHIP TO CITY	LONG ISLAND CITY
10	J	SHIP TO STATE	NY
11	K	SHIP TO ZIP	11101
12	L	SHIP TO COUNTRY	USA
13	M	SUB TOTAL	8.7
14	N	FREIGHT	8.4
15	O	HANDLING FEE	3.95
16	P	INVOICE TOTAL	56.84
17	Q	TRACK NUM	1ZE435930310783934
18	R	TOTAL CASES	1
19	S	SHIP VIA	Not Used
20	T	BOX NUMBER	1
21	U	STYLE	2400B
22	V	DESCRIPTION	GILDAN 100% YOUTH L/S WHITE
23	W	COLOR	White
24	X	SIZE	L
25	Y	QTY	3
26	Z	INVENTORY KEY	25852
27	AA	SIZE ID	4
28	AB	LPN (License Plate Number)	LP0002488302

Daily Invoice Text File

The Daily Invoice file is created upon request and the files are created nightly for all orders invoiced that day and are exported nightly to your FTP outbound folder after 12 PM PST.

123456_Invoice_Details-06-18-15.txt – Fixed Width Data

The first 10 characters are the customer's account number. The 5 characters after represent the next field.

CHARACTERS	FIELD NAME	EXAMPLE
1-10	Account Number	0000123456
11-38	Account Name	Company Name
39-47	Invoice number	0583167000
49-57	Invoice Date	2019-06-18
58-72	Customer PO Number	PO NUMBER
73-82	Order Date	2019-06-18
83-92	Due Date	2019-07-18
93-132	Ship To Name	ABC CO
133-135	Ship To State	FL
136-145	Ship Date	2019-06-18
146-157	Freight Method	Not Used
158-169	Terms	NET 30
170-179	Unique Key	Unique Key
180-189	Style No	K500
190-203	Color	Light Blue
204-253	Description	PA SILK TOUCH POLO LIGHT BLUE
254-257	Size	M
258-263	Pieces	00002
264-273	Price	00000007.49
274-283	Amount	000000014.98
284-293	Sales Tax	00000000.00
294-303	Shipping Handling	00000003.50
304-313	Total	000000018.48
314-323	Invoice Total	000000018.48
324-332	Sales Order #	0123456789

Daily Invoice Excel File

The Daily Invoice Excel file is created upon request and the invoice .XLSX file is emailed daily to your email address and contains all the invoices for the previous day's orders. Columns M-T may display multiple line items for each invoice.

A	B	C	D	E	F	G	H	I	J	K	L	M	N	O	P	Q	R	S	T	U	V	W
Account No	Account Name	Invoice No	Invoice Date	Customer PO No	Order Date	Due Date	Ship To Name	Ship To State	Ship Date	Freight Method	Terms	Unique Key	Style No	Color	Description	Size	Pieces	Price	Amount	Sales Tax	Shipping Handling	Invoice Total
12345	TEST ACCOUNT	56788	05/21/2024	samplePO-1		06/20/2024	Test Account	WA		Not Used	Net30									0.00	0.00	31.48
												384044	F281	Black	ST Super Hvywght Pullover Hoodie Sweatshirt	L	1	22.99	22.99			
												1236933	K110	DeepBlack	PA Dry Zone UV Micro-Mesh Polo	M	1	8.49	8.49			
55124	TEST ACCOUNT	56789	05/21/2024	samplePO-2		06/20/2024	Test Account	WA		Not Used	Net30									0.00	0.00	226.82
												230962	L508	Blk/LightStone	PA Wms S/S Easy Care Shirt	S	2	12.49	24.98			
												230964	L508	Blk/LightStone	PA Wms S/S Easy Care Shirt	L	2	12.49	24.98			
												230965	L508	Blk/LightStone	PA Wms S/S Easy Care Shirt	XL	2	12.49	24.98			
												1238155	LK110	DeepBlack	PA Wms Dry Zone UV Micro-Mesh Polo	XL	1	8.49	8.49			
												1061525	LST652	IronGrey/TiRed	ST Wms Colorblock Microspique Sport-Wick Polo	XL	1	12.49	12.49			
												231142	S508	Blk/LightStone	PA S/S Easy Care Shirt	S	2	12.49	24.98			
												231143	S508	Blk/LightStone	PA S/S Easy Care Shirt	M	2	12.49	24.98			
												231144	S508	Blk/LightStone	PA S/S Easy Care Shirt	L	2	12.49	24.98			
												231145	S508	Blk/LightStone	PA S/S Easy Care Shirt	XL	2	12.49	24.98			
												231162	S508	Blk/LightStone	PA S/S Easy Care Shirt	3XL	2	15.49	30.98			

IT - Integration - Customer Invoice Details_123456.xlsx

COLUMN	FIELD NAME	EXAMPLE
A	Account Number	123456
B	Account Name	Company Name
C	Invoice number	58316700
D	Invoice Date	6/18/2019
E	Customer PO Number	PO NUMBER
F	Order Date	6/18/2019
G	Due Date	7/18/2019
H	Ship To Name	ABC CO
I	Ship To State	FL
J	Ship Date	6/18/2019
K	Freight Method	Not Used
L	Terms	NET 30
M	Unique Key	Unique Key
N	Style No	K500
O	Color	Light Blue
P	Description	PA SILK TOUCH POLO LIGHT BLUE
Q	Size	M
R	Pieces	2
S	Price	7.49
T	Amount	14.98
U	Sales Tax	0
V	Shipping Handling	3.5
W	Total	18.48
X	Invoice Total	18.48

EDI-810 Standard Daily Invoice File

Please call or email SanMar integrations to request our 810 Outbound Implementation Guide. We will need the following information to set up the delivery of your EDI-810 file.

Customer Name:

Customer Number:

EDI Number:

Current EDI qualifier:

Current element separator:

Interchange ID Qualifier:

VAN:

Server Connection: Direct to SanMar? OR Third-party Connection?

338469-201602090116-020834019-810.x12 Invoice sample

ISA*00* *00* *ZZ*84863 *12*020834019
*130628*1514*U*00401*000139642*0*T*>~GS*IN*84863*020834019*20130628*151433*139661*X*004010~
ST*810*1141379~BIG*20130628*44209995*20130628****CN*00~CUR*BY*USD~
N1*BY*Company Name~
N3*2211 Customer AVE*SUITE 601~
N4*SEATTLE*WA*98121*USA~
N1*SU*SanMar Corporation~
N3*22833 SE Black Nugget Road, Suite 130~
N4*Issaquah*WA*98029*USA~
N1*ST*Company Name~
N3*2211 Customer AVE*SUITE 601~
N4*SEATTLE*WA*98121*USA~FOB*PC*ZZ~
IT1*1*-3*EA*9.99*PE*VN*167592*ZZ*K420 - Athletic Gold - S~PID*F****PA Pique Knit Polos Athletic Gold S~
IT1*2*-10*EA*9.99*PE*VN*216181*ZZ*K420 - Blueberry - XS~PID*F****PA Pique Knit Polos Blueberry XS~
TDS*-10632~TXI*ZZ*13.31~SAC*C*D240***1024*****Shipping Charges~CTT*2~SE*22*1141379~
ST*810*1141380~BIG*20130628*44210000*20130628****DR*00~CUR*BY*USD~
N1*BY*Company Name~
N3*2211 Customer AVE*SUITE 601~
N4*SEATTLE*WA*98121*USA~
N1*SU*SanMar Corporation~
N3*22833 SE Black Nugget Road, Suite 130~
N4*Issaquah*WA*98029* N1*ST*Company Name~
N3*%CompanName*7100 Customer DRIVE# D~
N4*LOUISVILLE*KY*40258*USA~FOB*PC*ZZ~
N9*L1*Freight Savings~MSG*FREIGHT SAVINGS OF \$0.00~
IT1*3*10*EA*9.99*PE*VN*92031*ZZ*K420 - Black - XS~PID*F****PA Pique Knit Polos Black XS~

IT1*4*20*EA*9.99*PE*VN*92032*ZZ*K420 - Black - S~PID*F****PA Pique Knit Polos Black S~
IT1*5*1*EA*9.99*PE*VN*92033*ZZ*K420 - Black - M~PID*F****PA Pique Knit Polos Black M~
IT1*6*1*EA*9.99*PE*VN*92034*ZZ*K420 - Black - L~PID*F****PA Pique Knit Polos Black L~
IT1*7*1*EA*9.99*PE*VN*92035*ZZ*K420 - Black - XL~PID*F****PA Pique Knit Polos Black XL~
IT1*8*3*EA*9.99*PE*VN*167592*ZZ*K420 - Athletic Gold - S~PID*F****PA Pique Knit Polos Athletic Gold S~
IT1*9*10*EA*9.99*PE*VN*216181*ZZ*K420 - Blueberry - XS~PID*F****PA Pique Knit Polos Blueberry XS~
IT1*10*88*EA*9.99*PE*VN*216182*ZZ*K420 - Blueberry - S~PID*F****PA Pique Knit Polos Blueberry S~

TDS*141898~TXI*ZZ*80.32~CTT*8~SE*35*1141380~

ST*810*1141381~BIG*20130628*44210001*20130628****DR*00~CUR*BY*USD~

N1*BY*Company Name~

N3*2211 Customer AVE~SUITE 601~

N4*SEATTLE*WA*98121*USA~

N1*SU*SanMar Corporation~

N3*22833 SE Black Nugget Road, Suite 130~

N4*Issaquah*WA*98029*USA~

N1*ST*Company Name~

N3*6415 NE Customer PLACE~

N4*KIRKLAND*WA*98034*USA~FOB*PC*ZZ~

N9*L1*Freight Savings~MSG*FREIGHT SAVINGS OF \$0.00~

IT1*11*2*EA*9.99*PE*VN*195991*ZZ*K420 - Classic Navy - XS~PID*F****PA Pique Knit Polos Classic Navy XS~

IT1*12*1*EA*9.99*PE*VN*195992*ZZ*K420 - Classic Navy - S~PID*F****PA Pique Knit Polos Classic Navy S~

IT1*13*10*EA*9.99*PE*VN*216181*ZZ*K420 - Blueberry - XS~PID*F****PA Pique Knit Polos Blueberry XS~

IT1*14*20*EA*9.99*PE*VN*216183*ZZ*K420 - Blueberry - M~PID*F****PA Pique Knit Polos Blueberry M~

TDS*36099~TXI*ZZ*31.32~CTT*4~SE*27*1141381~GE*3*139661~IEA*1*000139642~

Change Log

July 2024

- Added Support for VA warehouse (31)
- Updated Brand Restrictions Page.

April 2024

- Updated Brand Restrictions Page.
- Formatting Updates

October 2023

- Updated Brand Restrictions Page.

June 2023

- Updated Brand Restrictions Page.
- Removed closeout Status references.

December 2022

- Updated Brand Restrictions Page.
- Updated EPDD and SDL reference to show full file name.
- Updated EPDD and SDL with columns for GTIN and Decoration_Spec_Sheet

August 2022

- Updated Invoice File to Include Sales Order #.
- Updated Brand Restrictions Page.

June 2021

- Updated Shopify weight to reflect dozen's weight.

May 2020

- Updated Daily Status file: Invoice# is no longer used and will be replaced with SALESORDER# for tracking purposes.
- Updated Invoice Details File: Removed Freight Method data which now states NOT USED.
- Updated EDI 810-standard details: Removed Freight Saving Amount will now show \$0.00
- Dozens pricing is no longer offered and will be replaced with piece pricing in all files.
- Added sanmar_dip.txt and sanmar_closeouts_dip.txt files are updated hourly.

August 2019

- Removed data from legacy product text data files.

January 2019

- Removed Brand: District Made
- Added Brand: Carhartt
- Added License Plate Number to the Status file
- Added PMS Color Code to the EPDD and SDL CSV files

June 2018

- Update GTIN file name/location
- Added Brand: Bella+Canvas
- Added column information for the activeproductexport.txt file
- Added column information for the closeout_activeproductexport.txt file

April 2018

- Added FRONT_FLAT, BACK_FLAT and MODEL_BACK image URLs.
- Updated Brand Name NIKE GOLF to NIKE

December 2017

- Updated links to sanmar.com
- Updated Brand Restriction information

October 2017

- Updated links to sanmar.com
- Updated Brand Restriction information
- Added The North Face to Brand Restrictions
- Added Rabbit Skins to Brand Restrictions

April 2017

- Added more detailed information on the special pricing files.